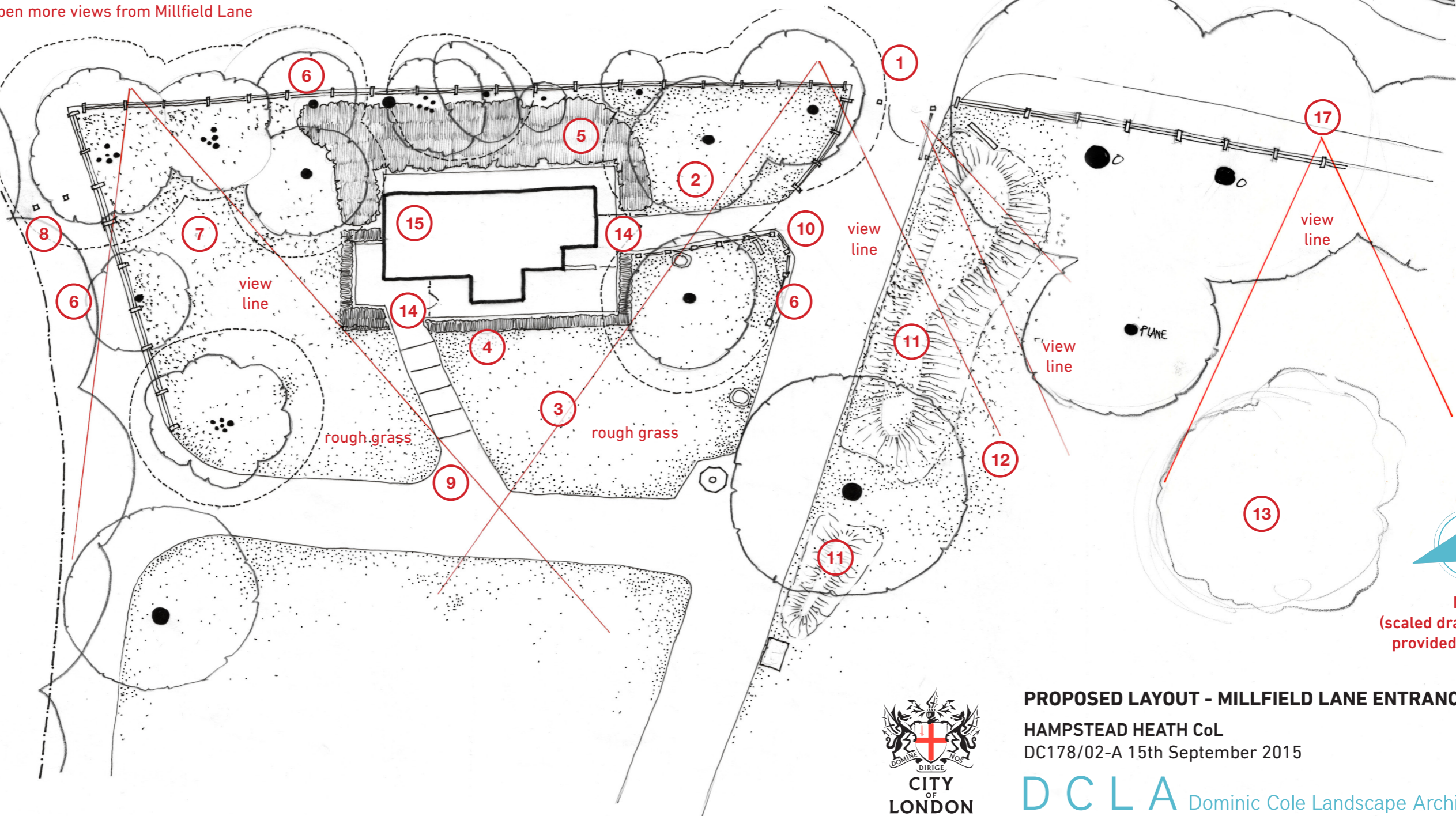


1. Replace metal pole gate with timber pole gate
2. Yew and Laurel all around toilets – crown lift to allow views under canopy and light to ground level. Reduce crown spread and deadwood. (see view lines)
3. Remove all other coppiced laurel/thorn etc. and replace with grass and hedge around the toilet block (to be maintained as 'rough grass').
4. New hedge max 1.2m high – Hawthorn and Holly.
5. New native mix of Hawthorne, holly, dogwood, blackthorn. (maintain as thicket max 1.2m high.)
6. Remove all chespile fencing and replace (where shown) with timber post and rail to match existing along Millfield Lane.
7. By crown lifting/thinning the laurel, create views into the Heath from Millfield Lane.
8. Remove metal pole gate and replace with wooden posts.
9. Create curved corner.
10. Create curved corner.
11. Raise an earth mound alongside the path – max 1m high – with steeper profile on pathside and shallow profile facing in to the Heath. The aim is to discourage use of the desire lines. The mound will be maintained as rough grass.
12. Desire lines to be properly loosened and re-seeded. (Surface harrowing is insufficient to remove compaction – it needs deeper cultivation to improve drainage, air flow etc.)
13. Reduce spread of willow clump to allow clear views towards the Boating Pond.
14. Relocate night gates
15. Add timber cladding to building
17. Longer term - open more views from Millfield Lane



NTS
(scaled drawings can be provided on request)



PROPOSED LAYOUT - MILLFIELD LANE ENTRANCE

HAMPSTEAD HEATH CoL
DC178/02-A 15th September 2015

DCLA Dominic Cole Landscape Architects
studio@dominiccole.net / 0207 700 7510 / 42 Brecknock Road, London, N7 0DD